

WHAT WILL HAPPEN TO MY CHILD AFTER SURGERY OR DEVICE CLOSURE?

The long term outcome is excellent and usually no further treatment or intervention is needed. However long term follow up may be required for those who have uncommon complication.

ASD IN ADULTS

ASD is the most commonly missed cardiac lesions during childhood as they usually have no symptom.

The first symptom may present in adulthood when complications develop.

The common symptoms are palpitation (heart beating fast), reduced effort tolerance, breathlessness, fainting episode.

Untreated large ASD can also cause the pressures in your lung to increase (pulmonary hypertension) and cause lung damage (pulmonary vascular disease).

The treatment for this group of patients is more sophisticated. The feasibility of ASD closure depends on the severity of related complications.

Institut Jantung Negara (245794-V)
145, Jalan Tun Razak, 50400 Kuala Lumpur



Published by Corporate Communications Department

- The long term outcome is excellent and usually no further treatment or intervention is needed in children or uncomplicated ASD.



WHAT HAPPENS
AFTER SURGERY?

Atrial Septal Defect (ASD)

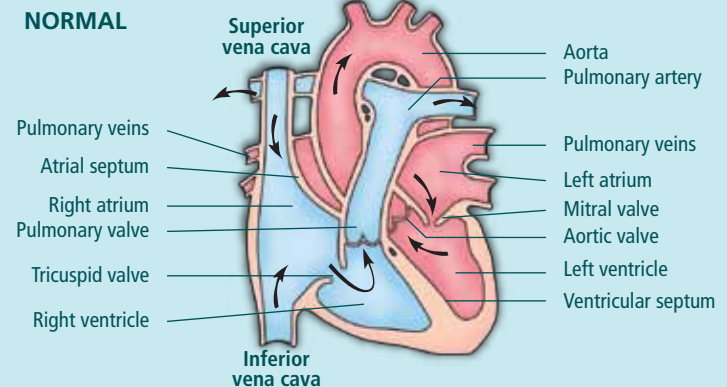
WHAT IS IT AND HOW DOES IT AFFECT THE HEART?

ASD is an opening or hole (defect) in the wall (septum) between the heart's two upper chambers (atria).

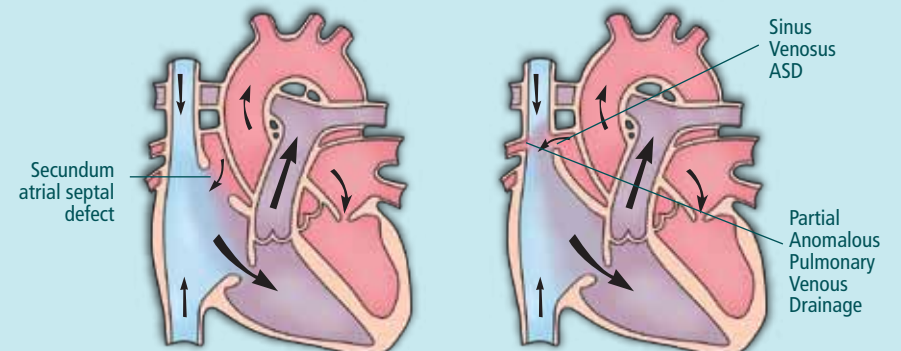
Blood can flow across the hole from the left upper heart chamber (left atrium) to the right upper chamber (right atrium) and out into the lung arteries.

If the hole is small, it may not cause problems.

If the hole is large, extra blood being pumped into the right heart and the lung arteries makes the heart and lungs work harder. The right heart will get enlarged and the lung arteries can become gradually damaged.



SECUNDUM ATRIAL SEPTAL DEFECT



HOW WOULD IT AFFECT MY CHILD?

The children with ASD often have no symptoms.

In children with a large ASD, the right heart and lungs have to work harder and over time, usually in the adulthood, this may cause right heart failure, permanent damage to the lung blood vessels due to high lung pressure and rhythm problems.

WHAT WILL HAPPEN TO MY CHILD IF UNTREATED?

If the hole is small, your child will usually remain well with no symptom.

If the hole is large, he / she will present in her / his adulthood with rhythm problems, right heart failure and high lung pressure with permanent damage of lung blood vessels. The common symptoms are palpitation, reduced effort tolerance, fainting episode and breathlessness.

HOW CAN IT BE TREATED?

If the hole is small, no intervention is needed as the heart and lungs don't work harder. Small ASD that are noted during infancy often close or gets smaller naturally without any medication.

If the ASD is large, it can be closed with open-heart surgery, or by cardiac catheterization using a device for selected group of patients.

TRANSCATHETER CLOSURE OF SECUNDUM ASD USING DEVICE

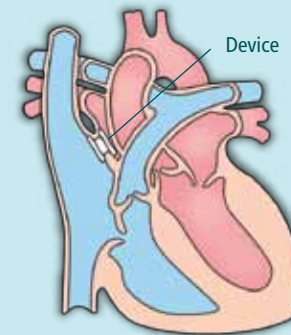
This procedure is recommended for those secundum ASD with adequate margin to accommodate the device. A catheter which is loaded with a device will be introduced into a leg vein at the groin. The device will be placed at the defect to achieve closure.

SURGICAL CLOSURE OF ASD

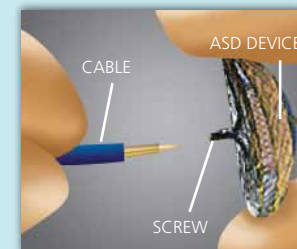
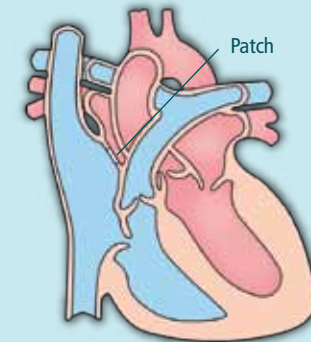
All types of ASD can be closed surgically.

The operation involves a sternotomy and open heart surgery. The defect can be sewn directly or using a patch.

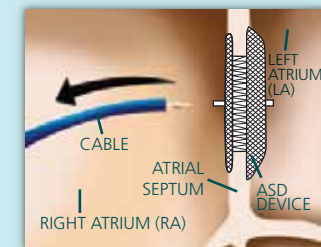
CLOSURE BY DEVICE FOR SECUNDUM ASD



SURGICAL CLOSURE BY PATCH

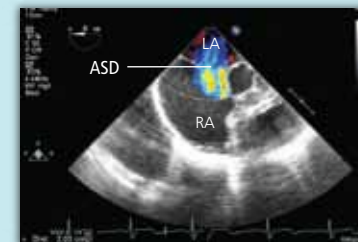


ASD DEVICE



DEVICE IN THE HEART

TRANSESOPHAGEAL ECHO



PRE ASD CLOSURE



POST ASD CLOSURE