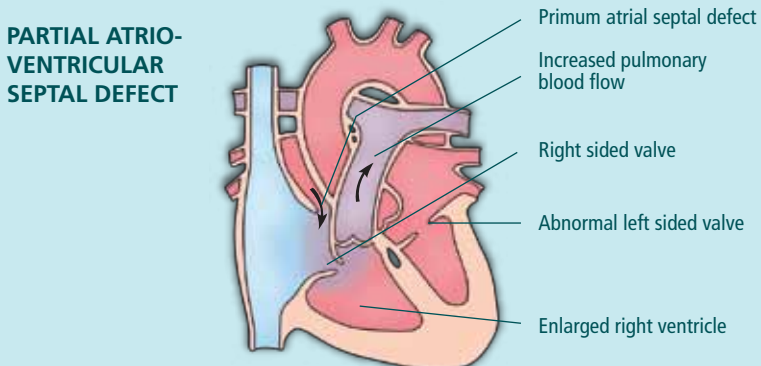
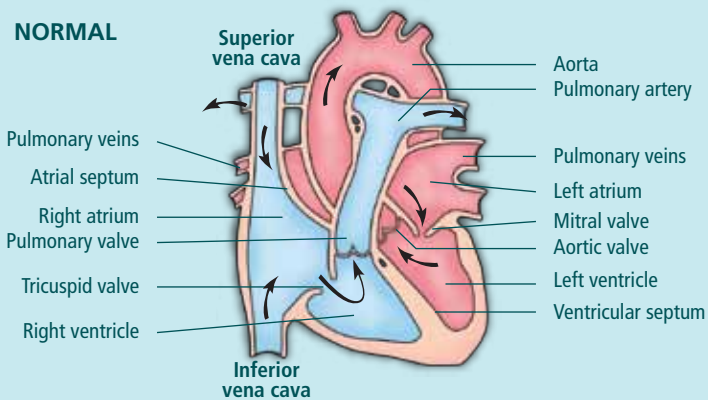


# Primum Atrial Septal Defect (Partial AVSD)

## WHAT IS IT AND HOW DOES IT AFFECT THE HEART?

A hole is present in the lower part of the wall separating the two upper chambers. Blood can flow across the hole from the left upper chamber to the right one, leading to enlargement of the right ventricle and excessive blood flow in the lung circulation.

Abnormalities of one or more heart valves (especially the valve between the left upper and lower chamber - Mitral Valve) frequently coexist with this defect. Leakage of the abnormal valve causes excessive work load on the heart.



## HOW WOULD IT AFFECT MY CHILD?

The affected children usually have symptoms during childhood especially in those children with associated leaky valve. The symptoms are breathlessness, poor feeding and slow weight gain.

## WHAT WILL HAPPEN TO MY CHILD IF UNTREATED?

This type of defect won't close on its own. Excessive blood flow to the right heart and lungs lead to right heart failure, rhythm problem and high lung pressure in the adulthood.

## HOW CAN IT BE TREATED?

This defect requires surgery and cannot be closed with a 'Device'. The operation involves sewing a patch over the defect and repairing the abnormal valve (Mitral Valve).

## WHAT WILL HAPPEN TO MY CHILD AFTER SURGERY?

Surgical outcome is good. However, not uncommonly, the repaired valve may need re-do surgery if the residual leakage is significant.



2

Institut Jantung Negara (245794-V)  
145, Jalan Tun Razak, 50400 Kuala Lumpur



Published by Corporate Communications Department

- Surgical outcome is good. However, not uncommonly, the repaired valve may need re-do surgery if the residual leakage is significant.



WHAT HAPPENS  
AFTER SURGERY?