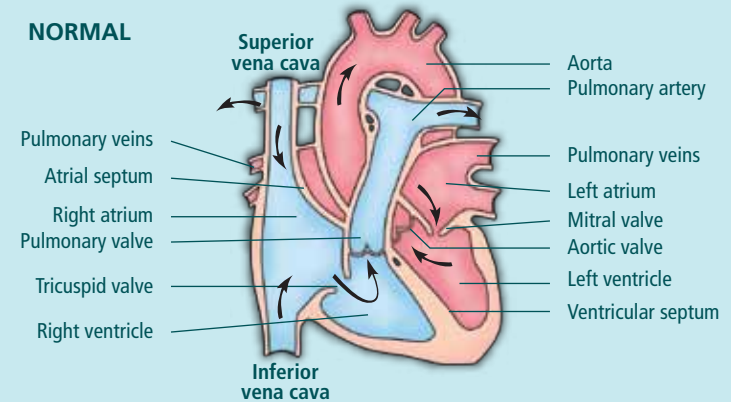


Transposition Of The Great Arteries (TGA)

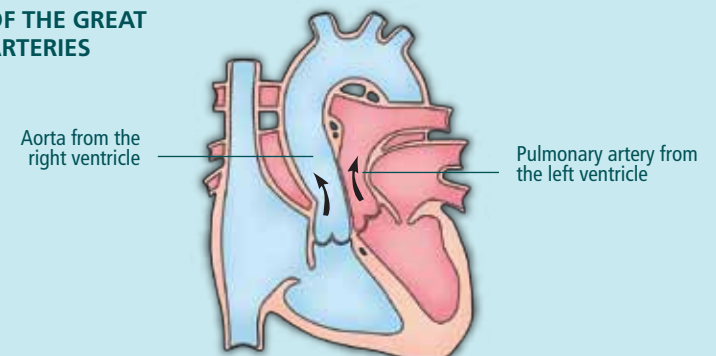
WHAT IS IT AND HOW DOES IT AFFECT THE HEART?

The blood that has been used by the body gets pumped back into the body instead of the lungs to get oxygen. The oxygen rich blood from the lungs however, gets pumped back into the lungs and do not go to the rest of the body. The only way to survive is for the red and blue blood to mix, usually via a defect between the walls of the heart or through the patent ductus arteriosus.

NORMAL



TRANSPOSITION OF THE GREAT ARTERIES



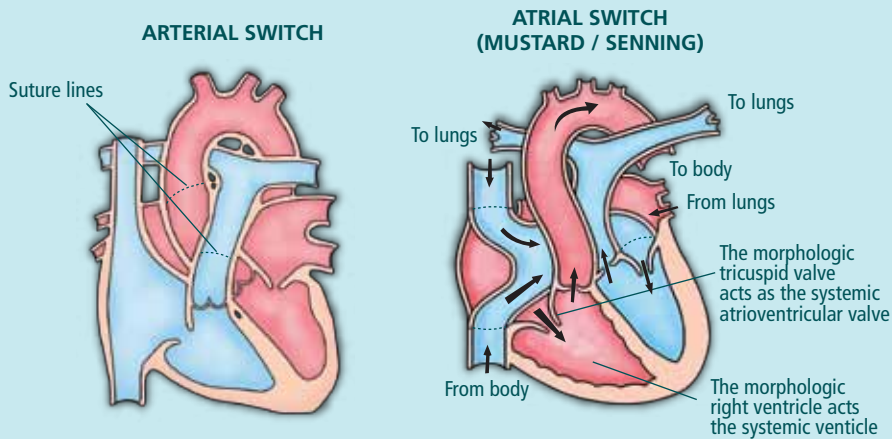
HOW WOULD IT AFFECT MY CHILD?

They normally present in the first few days of life as the baby becomes blue and has difficulties feeding. Sometimes the symptoms are delayed if there is enough mixing.

HOW CAN IT BE TREATED?

The first step is to establish adequate mixing between the blue and the red blood. Sometimes the doctor may have to increase the mixing of the blood by performing a balloon septostomy where a catheter with a balloon tip could be passed through the vein at the top of your baby's groin, into the heart and then the wall of the heart ballooned open.

The arterial switch operation is done when your baby is about a month old. The great vessels are switched and any defects closed.



2

WHAT WILL HAPPEN TO MY CHILD IF UNTREATED?

Your child will become progressively blue and the left side of the heart smaller and smaller. Your child will not survive without surgery.

WHAT HAPPENS AFTER SURGERY?

The long term outcome after arterial switch operation is good. Sometimes, narrowing of the main branches of lung arteries and stretching of coronary arteries may occur with time. The aortic valve can also leak.

In some patients there is a need for another surgery to correct the narrowing in the lung vessels or the leaking valve.



3

Institut Jantung Negara (245794-V)
145, Jalan Tun Razak, 50400 Kuala Lumpur



Published by Corporate Communications Department

- In some patients following arterial switch operation there is a need for another surgery to correct the narrowing in the lung vessels or the leaking valve.
- For patients following atrial switch operation, long terms follow-up is important as patients can develop complication.



WHAT HAPPENS
AFTER SURGERY?