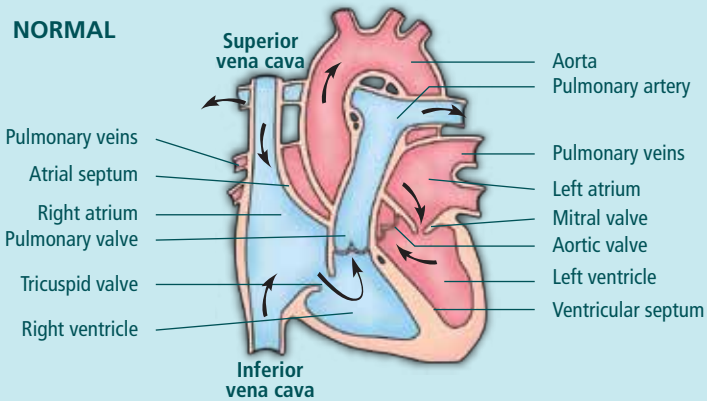


Truncus Arteriosus

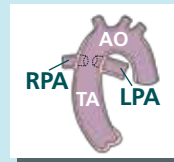
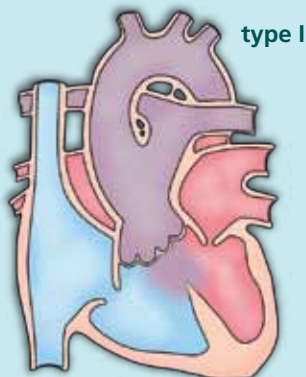
WHAT IS IT AND HOW DOES IT AFFECT THE HEART?

The blood vessels to the lung and body arise as one vessel instead of two and then branches out to the lungs. There is usually a large hole between the pumping chambers of the heart and sometimes blockages or narrowing of the blood vessel to the lungs may occur. The truncal valve can also be abnormal.

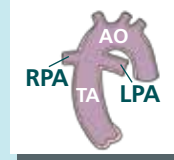
NORMAL



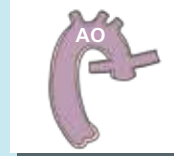
TRUNCUS



type II



type III



type IV

HOW WOULD IT AFFECT MY CHILD?

Your child will become increasingly blue and may have trouble feeding and growing.

HOW CAN IT BE TREATED?

The blood vessels will need to be separated and the operation done early in order to avoid the high pressures to the lungs. A tube (conduit) is used to establish the supply to the lungs and the hole closed.

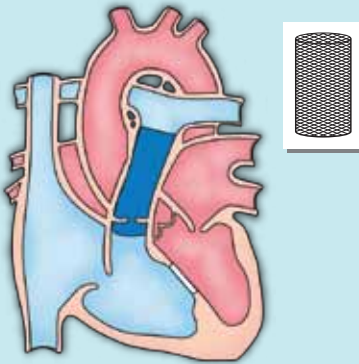
WHAT WILL HAPPEN TO MY CHILD IF UNTREATED?

The high pressures to the lungs would cause irreversible lung damage which is not compatible with life.

WHAT HAPPENS AFTER SURGERY?

The conduit does not grow with your child, so at least a further 2 operations are required before your child achieves adult size.

AFTER CONDUIT REPAIR



2

Institut Jantung Negara (245794-V)
145, Jalan Tun Razak, 50400 Kuala Lumpur



Published by Corporate Communications Department

- The conduit does not grow with your child, so at least a further two operations are required before your child achieves adult size.



WHAT HAPPENS
AFTER SURGERY?